



ACROSS
INTERNATIONAL

Material
Processing
Equipment

ISO 9001:2015

AT SERIES VACUUM DRYING OVENS



AT SERIES

SIZES FROM 0.9 TO 16 CUBIC FEET (25 TO 453L)

BENCHTOP MODELS

Compact, powerful, precise

AT09-UL



Temp: 20°C to 250°C
5-Sided Heating

Shipping Weight: 150 Lbs (68.03kg)
Dimensions: 23.4x17.25x19"

4 shelves included. Can stack up to 8.



AT19-UL



Temp: 20°C to 250°C
5-Sided Heating

Shipping Weight: 200 Lbs (90.7kg)
Dimensions: 28x20x21.75"

5 shelves included. Can stack up to 10.



MULTIZONE MODELS

Separate temperature controllers connected to temperature detection and heating elements in each shelf

Temp: 20°C to 250°C
3x Heated Shelves

Shipping Weight: 400 Lbs (181.4kg)
Dimensions: 30.5x24x29"



AT32-UL



AT75-UL



Temp: 20°C to 250°C
5x Heated Shelves

Shipping Weight: 630 Lbs (283.8kg)
Dimensions: 35x31x38"



MULTIZONE MODELS

Vacuum ovens can boost production by drastically shortening drying times

AT160-UL



Temp: 20°C to 250°C
6x Heated Shelves

Shipping Weight: 940 Lbs (426.4kg)
Dimensions: 33x37x52"



SPECIFICATIONS

Model		AT09-UL	AT19-UL	AT32-UL	AT75-UL	AT160-UL			
Electrical Requirements		110V, 50/60Hz, 1-PH / 220V, 50/60Hz 1-PH							
Power Output		1500W / 1200W	1500W						
Environmental Operation Conditions		<ul style="list-style-type: none">Indoor use and altitude up to 2000mTemperature 5-40°CMax. relative humidity 80% for temperatures up to 30°C decreasing linearly to 50% relative humidity at 40°CMains supply volt fluctuations up to ±10% of the nominal voltageTransient overvoltage up to the levels of overvoltage category II (See Note 1)Temporary overvoltage occurring on the mains supply.Applicable pollution degree of the intended environment (pollution degree 2 inmost cases (see Note 2) <p>Note 1: These levels of transient overvoltage are typical for equipment supplied from the building wiring.</p> <p>Note 2: Manufacturers may specify more restricted environmental conditions for operation, nevertheless the equipment must be safe within these normal environmental conditions.</p>							
		Chamber		Size (WxDxH)	12x12x11" (30.5x30.5x28cm)	16.5x14.5x14" (42x36.8x35.6cm)	18x18x18" (45.7x45.7x45.7cm)	22x23.5x25" (55.9x59.7x63.5cm)	25.6x30x35.5" (65x76.2x90.2cm)
				Material	Stainless Steel				
		Capacity	0.9 cubic foot	1.9 cubic foot	3.2 cubic foot	7.5 cubic foot	16 cubic foot		
Temperature Controller		Controller	3 rd gen low proportional gain, microcomputer PID controlled with LCD display						
		Range	Ambient to 480°F (248°C)					Ambient to 200°F (100°C)	
		Display Units	Fahrenheit or Celsius						
		Accuracy	± 1						
		Uniformity	± 5% of setpoint						
		Dwelling Time	1 to 9999 minutes						
		Warm up time to 100°F	40 minutes	45 minutes	35 minutes	45 minutes	55 minutes		
Vacuum		Ultimate vacuum level: better than 500 microns/millitorrs (may vary based on your altitude) Mechanical vacuum gauge range: 0 to 30" mercury Mechanical vacuum gauge type: oil-filled Vacuum port: KF25 flange x 1 Vent port: KF25 flange x1							
Door gasket material		Silicone (Standard), Viton (Optional)							
Observation window		1/2" tempered safety glass							
Shelves		Included with oven purchase	4 aluminum slide-in shelves	5 aluminum slide-in shelves	3 non-removable aluminum shelves	5 non-removable aluminum shelves	6 non-removable aluminum shelves		
		Size (WxD)	11.5x11.25" (29.2x28.6cm)	16x14.25" (40.6x36.2cm)	17.5x17.25" (44.4x43.8cm)	22x23.25" (55.9x59.1cm)	25x29.25" (63.9x59.1cm)		
		Distance between shelves	1" (2.54cm)		4.75" (12.1cm)	2.25" (5.7cm)	2.375" (6.03cm)		
In-door lights		White LED (pre-installed)							
Safety		Built-in circuit breaker, controller overheat protection, secondary over-temp protection dial							
Compliance		UL (E482564), CSA, CE							
Warranty		2 years							

FLOOR MODELS

5 CU FT & 7.5 CU FT

Large open chambers with fully removable shelves that are easy to clean. Perfect for large samples and applications like decarboxylation and drying solvent or moisture.

AT50x



Temp: 20°C to 250°C
5-Sided Heating

Shipping Weight: 548 Lbs (248.6kg)
Dimensions: 32.25x28x30"

7 shelves included. Can stack up to 14"



AT75x

Temp: 20°C to 250°C
5-Sided Heating

Shipping Weight: 699 Lbs (317.1kg)
Dimensions: 37x35.5x38"

9 shelves included. Can stack up to 18.



37 inches
(94cm)



35.5 inches (90.2 cm)

38 inches (96.52 cm)

FLOOR MODELS

16 CU FT

Massive vacuum ovens for high production capacity.



Temp: 20°C to 100°C
5-Sided Heating

Shipping Weight: 1200 Lbs (544.3kg)
Dimensions: 44x38x51.5"

13 shelves included. Can stack up to 26.

SPECIFICATIONS

Model		AT50x	AT75x	AT160x
Electrical Requirements		110V, 50/60Hz, 1-PH / 220V, 50/60Hz 1-PH	220v +/- 10% 50/60Hz 1-ph	
Power Output		2600W	3800W	6000W
Environmental Operation Conditions		<ul style="list-style-type: none"> Indoor use and altitude up to 2000m Temperature 5-40°C Max. relative humidity 80% for temperatures up to 30°C decreasing linearly to 50% relative humidity at 40°C Mains supply volt fluctuations up to $\pm 10\%$ of the nominal voltage Transient overvoltage up to the levels of overvoltage category II (See Note 1) Temporary overvoltage occurring on the mains supply. Applicable pollution degree of the intended environment (pollution degree 2 in most cases (see Note 2)) <p>Note 1: These levels of transient overvoltage are typical for equipment supplied from the building wiring.</p> <p>Note 2: Manufacturers may specify more restricted environmental conditions for operation, nevertheless the equipment must be safe within these normal environmental conditions.</p>		
Chamber	Size (WxDxH)	19.75x21.5x19.75" (50.2x54.6x50.2cm)	22x23.5x25" (55.9x59.7x63.5cm)	25.6x30x35.5" (65.0x70.2x90.2cm)
	Material	Stainless Steel		
	Capacity	5 cubic foot	7.5 cubic foot	16 cubic foot
Temperature Controller	Controller	3 rd gen low proportional gain, microcomputer PID controlled with LCD display		
	Range	Ambient to 480°F (248°C)		Ambient to 200°F (100°C)
	Display Units	Fahrenheit or Celsius		
	Accuracy	± 1		
	Uniformity	$\pm 5\%$ of setpoint		
	Dwelling Time	1 to 9999 minutes		
	Warm up time to 100°F	45 minutes		40 minutes
Vacuum		Ultimate vacuum level: better than 500 microns/millitorrs (may vary based on your altitude) Mechanical vacuum gauge range: 0 to 30" mercury Mechanical vacuum gauge type: oil-filled Vacuum port: KF25 flange x 1 Vent port: KF flange x 1		
Door gasket material		Silicone		
Observation window		1/2" tempered safety glass		
Shelves	Included with oven purchase	7 aluminum pan-shaped shelves	9 aluminum pan-shaped shelves	13 aluminum pan-shaped shelves
	Size (WxD)	19.25x21x0.5" (48.89x53.34x1.3cm)	21.75x23x0.5" (55.24x58.4x1.3cm)	25x30x0.5" (63.9x76.2x1.3cm)
	Distance between shelves	1" (2.54cm)		
In-door lights		White LED (pre-installed)		
Safety		Built-in circuit breaker, controller overheat protection, secondary over-temp protection dial		
Compliance		UL (E482564), CSA, CE		

ECO MODELS

0.9 CU FT & 1.9 CU FT

More affordable and still made with the same quality you need and know! Perfect for smaller labs.

Temp: 20°C to 150°C
3-Sided Heating

Shipping Weight: 170 Lbs (77.1kg)
Dimensions: 23.4x17.25x19"

4 shelves included. Can stack up to 8.



AT09e



AT19e



Temp: 20°C to 150°C
3-Sided Heating

Shipping Weight: 240 Lbs (108.9kg)
Dimensions: 28x23x21.8"

9 shelves included. Can stack up to 18.



ECO MODELS

3.2 CU FT & 5.0 CU FT

ECO series Ai ovens are CE certified and come with a one-year warranty, while our premier AT series UL/CSA/CE certified models come with a 2-year warranty.

AT32e



Temp: 20°C to 150°C
3x Heated Shelves

Shipping Weight: 170 Lbs (77.1kg)
Dimensions: 30.5x24x29"



Temp: 20°C to 150°C
3-Sided Heating

Shipping Weight: 240 Lbs (108.9kg)
Dimensions: 32.25x28x30"

7 shelves included. Can stack up to 14.



AT50e



SPECIFICATIONS

Model	AT09e	AT19e	AT32e	AT50e
Electrical Requirements	110V or 220V $\pm 10\%$, 60Hz, 1-PH, 1500 watts	110V $\pm 10\%$ 60Hz 1-PH 13.6A, 1500 watts or 220V $\pm 10\%$ 50/60Hz 1-PH 6.8A, 1500 watts		110V or 220V $\pm 10\%$, 50/60Hz, 1-PH, 3000 watts
Chamber	Size: 12x12x11" Material: Stainless Steel Capacity: 0.9 cubic foot	Size: 16.5x14.5x14" Material: Stainless Steel Capacity: 1.9 cubic foot	Size: 18x18x18" Material: Stainless Steel Capacity: 3.2 cubic foot	Size: 19.75x21.5x19.75" Material: Stainless Steel Capacity: 5.0 cubic foot
Heater	3-sided heating (left 400W, right 400W, bottom 700W)		500 watts x3 built into 3 aluminum shelves	3-sided heating (left 800W, right 800W, bottom 1400W)
Temperature Range	20°C to 150°C			
Vacuum	Ultimate vacuum level: better than 500 microns/millitorrs Mechanical vacuum gauge range: 0 to 30" mercury Vacuum port: KF25 flange x 1 Vent port: 1/4" ball valve Vacuum pump: Sold separately			
Weight	Unit: 85 Lbs, Shipping: 170 Lbs	Unit: 135 Lbs, Shipping: 240 Lbs	Unit: 240 Lbs, Shipping: 380 Lbs	Unit: 390 Lbs, Shipping: 600 Lbs
Dimensions (WxDxH)	Unit: 23.4x17.25x19" with handle and vacuum port: 23.4x20x19"	Unit: 28x20x21.75" with handle and vacuum port: 28x23x21.75"	Unit: 30.5x24x29"	Unit: 32.25x28x30"
Shelves	Included with oven purchase: 4 aluminum slide-in shelf Capacity: 8 shelves max. Style: pan-shape Size: 11.5x11.25" Maximum area: 129.4x8=7 sq ft or 1035 inch ² Distance between shelves: one inch	Included with oven purchase: 5 aluminum slide-in shelf Capacity: 10 shelves max. Style: pan-shape Size: 16x14.25" Maximum area: 228x10=16 sq ft or 2280 inch ² Distance between shelves: one inch	Included with oven purchase: 3 non-removable aluminum shelves, 17.5x17.25" (WxD) each Optional stackable aluminum shelves: 17.5x17.25x2.25" (WxDxH) Total area without stackable shelves: 302x3=6 sq ft or 906 inch ² Total area with 3 stackable shelves: 302x6=12 sq ft or 1812 inch ² Distance between (without stackable shelves): 4.75 inches Distance between (with 3 stackable shelves): 2.25 inches Max. load capacity per shelf: 20Lbs	Included with oven purchase: 7 aluminum slide-in shelf Capacity: 14 shelves max. Style: pan-shape Size: 19.25x21x0.5" (WxDxH) Total area with 14 shelves: 39.3 sq ft or 5660 sq inch Distance between the most adjacent shelves: 1.25"
Door gasket material	Silicone (<i>standard</i>), Viton (<i>optional</i>)			
Observation window	1/2" tempered safety glass			
Safety	Built-in circuit breaker, Overheat shutoff protection			
In-door lights	White LED			
Warranty	1 year			
Compliance	CE			

ACCESSORIES

RECOMMENDED FOR PAIRING



VACUUM PUMPS

Vacuum Oven	Ai	Edwards	Agilent
AT09-UL	EasyVac 7 or SuperVac 5	nXDS6iC	IDP-3
AT19-UL	EasyVac 9 or SuperVac 5	nXDS6iC	IDP-3
AT32-UL	EasyVac 9 or SuperVac 11	RV8 or nXDS10iC	IDP-7
AT50x-UL	EV9-UL or SV11c-UL	nXDS10iC or RV8	IDP-7
AT75-UL	SuperVac 11 or SuperVac 21	E2M28 or nXDS10iC	IDP-15
AT160-UL	SuperVac 21	E2M28 or nXDS20iC	IDP-15



Vacuum Oven	Welch	ULVAC	Vacuubrand
AT09-UL	2034	DTC-41	MD1CNT
AT19-UL	2052	UDP-6	MD4CNT
AT32-UL	2163	UDP-6	-

COLD TRAPS

Ai		
		
T40-UL	T40x-UL	T80x-UL

MOBILE CARTS



MC32



MC75

Vacuum REGULATORS

DigiVac		
		
VPC	Concerto	SNAP



MC19-3

REPLACEMENT

PARTS

SHELVES

Vacuum Ovens	Flat Aluminum Shelves	Aluminum Pan Shelves
AT09-UL	SSA-09 (For old model ovens with brackets) SSA-09T (For new model ovens with brackets)	SSP-09
AT19-UL	SSA-19 (For old model ovens with brackets) SSA-19T (For new model ovens with brackets)	SSP-19
AT50x-UL	N/A	SSP-50
AT75x-UL	N/A	SSP-75
AT160x-UL	N/A	SSP-160



SSP-09



SSA-09



SSA-160

Floor Models	Stackable Aluminum Shelves
AT32-UL	SSA-32
AT75-UL	SSA-75
AT160-UL	SSA-160

AUXILIARY ITEMS

Auxiliary Items	AT09-UL	AT19-UL	AT32-UL	AT75-UL	AT160-UL/AT160x
Food Grade Solvent-Resist Viton Gasket	N/A	OSG.AT.Viton-19	OSG.AT.Viton-32	OSG.AT.Viton-75	OSG.AT.Viton-160
High Temp Door Sealing Gasket	OSG.AT09	OSG.AT19	OSG.AT32	OSG.AT75	OSG.AT160
3rd Gen Low Gain LCD Controller	VO-570LPGTC-UL (except "ECO" series)				
Vacuum/Vent Valve Knobs	VO-VacVent-Knob				
Inch Mercury Vacuum Gauge	VO-INVG				
KF16 to KF25 Flange Adapter	KF16-25				
KF25 to KF40 Flange Adapter	KF25-40				
KF/NW16 Aluminum Wing Nut Flange Quick Clamp & Centering Ring	KF16.FCCR				
KF/NW25 Aluminum Wing Nut Flange Quick Clamp	KF25.FC				
Reinforced Door Handle	VOHe-09	VOHe-19	VOHe-32	VOHe-75	VOHe-160
Tempered Door Glass	VO.AT09	VO.AT19	VO.AT32	VO.AT75	VO.AT160



KF25.FC



38-T



FVB-25-10



KF-38-1



KF25-C



KF25-T

PACKAGES

BENCHTOP MODELS



Ai AT09-UL Vacuum Oven
Agilent IDP-3 Vacuum Pump
Ai T40x_UL Cold Trap

Alternative Pumps for the AT09-UL



Ai EasyVac7



Ai SuperVac5-UL



EdwardsnXDS6iC



ULVAC DTC-41



Welch 2034



Vacuubrand MD1CNT



Ai AT19-UL Vacuum Oven
Agilent IDP-3 Vacuum Pump
Ai T40x_UL Cold Trap

Alternative Pumps for the AT19-UL



Ai EasyVac9



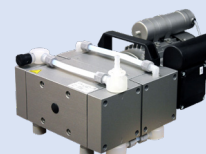
Ai SuperVac5-UL



EdwardsnXDS6iC



ULVAC DTC-41



Welch 2052



Vacuubrand MD4CNT

PACKAGES

FLOOR MODELS



Ai AT50x Vacuum Oven
Agilent IDP-7 Vacuum Pump
Ai T40x-UL Cold Trap



Ai AT75-UL Vacuum Oven
Agilent IDP-15 Vacuum Pump
Ai T40x-UL Cold Trap

Alternative Pumps for the AT50x



Ai EasyVac9



Ai SuperVac11-UL



Ai SuperVac21-UL



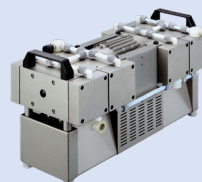
Edwards nXDS10ic



Edwards RV8



ULVAC UDP-6



Welch 2163



Agilent IDP-15

Alternative Pumps for the AT75x



Ai SuperVac11-UL



Ai SuperVac21-UL



Edwards nXDS10ic



Edwards nXDS20ic



Edwards E2M28

PACKAGES

FLOOR MODELS

AT160x

Ai AT160x Vacuum Oven
Edwards nXDS20ic Vacuum Pump
Ai T40x-UL Cold Trap



Alternative Pumps for the AT160x



Ai SuperVac21-UL



IDP-15



Edwards E2M28



Welch CRVPro30

PACKAGES

MULTIZONE MODELS

AT32-UL



Ai AT32-UL Vacuum Oven
Agilent IDP-7 Vacuum Pump
Ai T40x-UL Cold Trap

AT75-UL



Ai AT75-UL Vacuum Oven
Agilent IDP-15 Vacuum Pump
Ai T40x-UL Cold Trap

Alternative Pumps *for the AT32-UL*



Ai EasyVac9



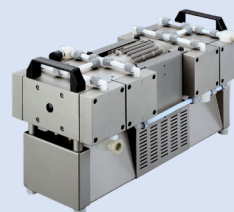
Ai SuperVac11-UL



Edwards RV8



Edwards nXDS10ic



Welch 2163



ULVAC UDP-6

Alternative Pumps *for the AT75-UL*



Ai SuperVac11-UL



Ai SuperVac21-UL



Edwards nXDS10ic



Edwards E2M28



Welch CRVPro 16

PACKAGES

MULTIZONE MODELS

Ai AT160-UL Vacuum Oven
Edwards nXDS20ic Vacuum Pump
Ai T40x-UL Cold Trap

AT160-UL



Alternative Pumps for the AT160-UL



Ai SuperVac21-UL



IDP-15



Edwards E2M28



Welch CRVPro30

STACKABLE PACKAGES

0.9 Cu Ft Vacuum Ovens
Mobile Cart Package



NEW

Digital Vacuum Gauge
Option Available



T80x Cold Trap
Upgrade Available



Compatible Vacuum Pumps

Ai	SVC5 (UL,CSA,CE Compliant to 110V models)
Agilent	IDP-7
Edwards	nXDS6ic
ULVAC	UDP-6
Welch	CRVPro8, 2052 (Only 110V models are UL, CSA)

Floor Space

Length	60 in
Width	36 in
Height	82 in
Weight	686 lb

STACKABLE PACKAGES

1.9 Cu Ft Vacuum Ovens

Mobile Cart Package



Compatible Vacuum Pumps

Ai	SVC11 (UL,CSA,CE Compliant to 110V models)
Agilent	IDP-15
Edwards	nXDS10ic
ULVAC	UDP-6
Welch	CRVPro8, 2163 (only 110V models are UL, CSA)

Floor Space

Length	112 in
Width	36 in
Height	82 in
Weight	1086 lb

STACKABLE PACKAGES

1.9 Cu Ft Vacuum Ovens
Mobile Cart Package



NEW

Digital Vacuum Gauge
Option Available



T80x Cold Trap
Upgrade Available



Compatible Vacuum Pumps

Ai	SVC11 (UL,CSA,CE Compliant to 110V models)
Agilent	IDP-15
Edwards	nXDS10ic
ULVAC	UDP-6
Welch	CRVPro8, 2163 (Only 110V models are UL, CSA)

Floor Space

Length	60 in
Width	36 in
Height	84 in
Weight	1086 lb

STACKABLE PACKAGES

1.9 Cu Ft Vacuum Ovens

Mobile Cart Package



Compatible Vacuum Pumps

Ai	SVC21 (UL,CSA,CE Compliant to 110V models)
Edwards	nXDS20ic, E2M28
Welch	CRVPro30
Agilent	IDP-15

Floor Space

Length	118 in
Width	36 in
Height	84 in
Weight	1386 lb

STACKABLE PACKAGES

3.2 Cu Ft Vacuum Ovens
Mobile Cart Package

NEW



Digital Vacuum Gauge
Option Available



T80x Cold Trap
Upgrade Available



Compatible Vacuum Pumps	
Ai	SVC11 (UL,CSA,CE Compliant to 110V models)
Agilent	IDP-15
Edwards	nXDS10ic, RV8
ULVAC	2163 (Only 110V models are UL, CSA)

Floor Space	
Length	63 in
Width	40 in
Height	67 in
Weight	1000 lb

STACKABLE PACKAGES

3.2 Cu Ft Vacuum Ovens
Mobile Cart Package



Compatible Vacuum Pumps

Ai	SVC21 (UL,CSA,CE Compliant to 110V models)
Edwards	nXDS20ic
Welch	CRVPro16, CRVPro30
Agilent	IDP-15

Floor Space

Length	118 in
Width	40 in
Height	67 in
Weight	1650 lb

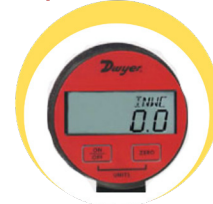
STACKABLE PACKAGES

5.0 Cu Ft Vacuum Ovens
Mobile Cart Package

NEW



Digital Vacuum Gauge
Option Available



T80x Cold Trap
Upgrade Available



Compatible Vacuum Pumps

Ai	SVC11 (UL,CSA,CE Compliant to 110V models)
Edwards	nXDS20ic
Welch	CRVPro16
Agilent	IDP-15

Floor Space

Length	67 in
Width	46 in
Height	81.5 in
Weight	1310 lb

STACKABLE PACKAGES

5.0 Cu Ft Vacuum Ovens

Mobile Cart Package



Digital Vacuum Gauge
Option Available



NEW



Compatible Vacuum Pumps

Ai	SVC21 (UL,CSA,CE Compliant to 110V models)
Edwards	E2M28
Welch	CRVPro48, CRVPro30

Floor Space

Length	126 in
Width	46 in
Height	81.5 in
Weight	2260 lb

STACKABLE PACKAGES

7.5 Cu Ft Vacuum Ovens
Mobile Cart Package

NEW



Digital Vacuum Gauge
Option Available



T80x Cold Trap
Upgrade Available



Compatible Vacuum Pumps

Ai	SVC21 (UL,CSA,CE Compliant to 110V models)
Edwards	E2M28
Welch	CRVPro48, CRVPro30
Agilent	IDP-15

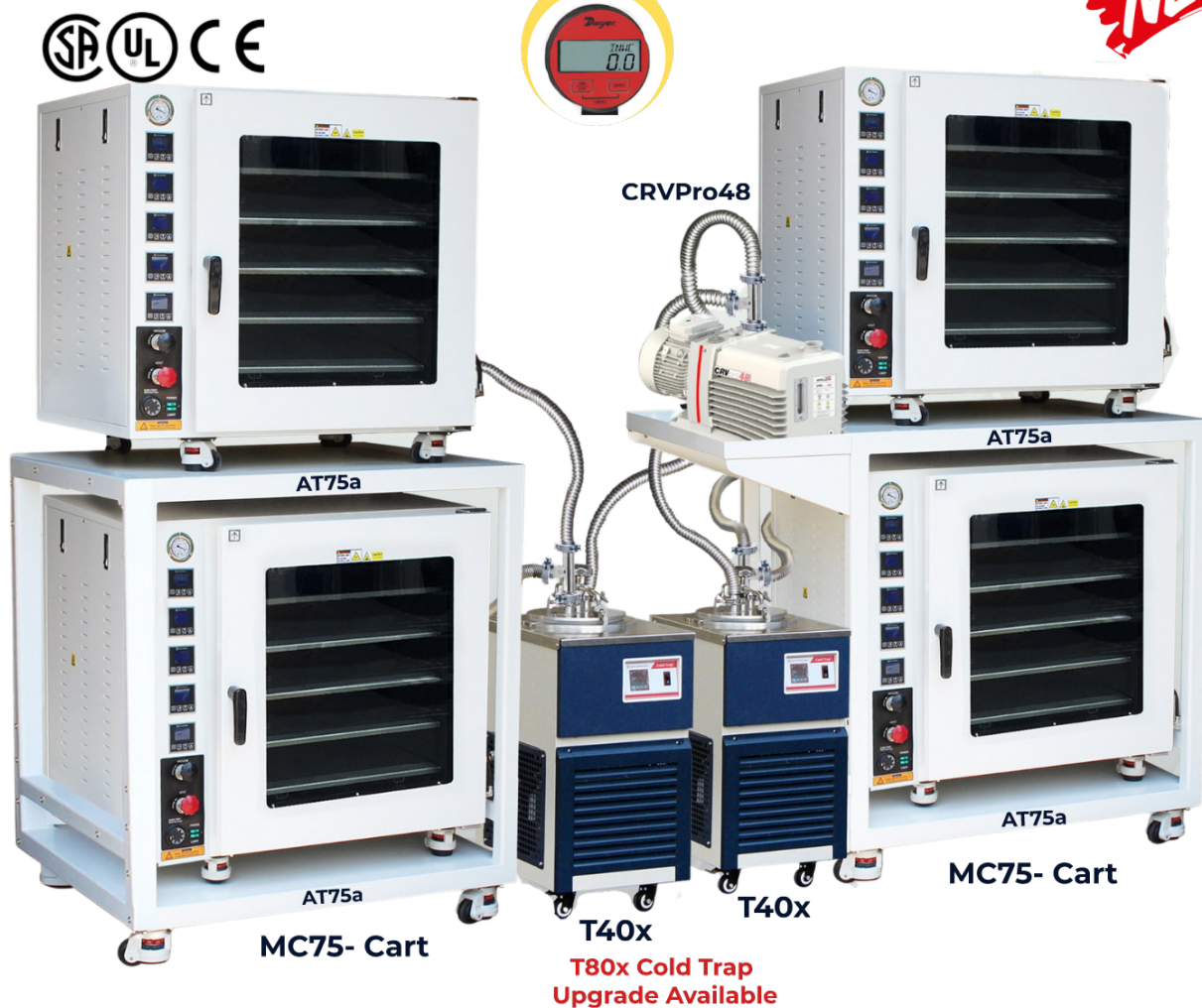
Floor Space

Length	67 in
Width	46 in
Height	84 in
Weight	1390 lb

STACKABLE PACKAGES

7.5 Cu Ft Vacuum Ovens

Mobile Cart Package



Compatible Vacuum Pumps

Welch

CRVPro48

Floor Space

Length	126 in
Width	46 in
Height	84 in
Weight	2420 lb

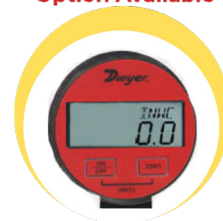
STACKABLE PACKAGES

7.5 Cu Ft Vacuum Ovens
Mobile Cart Package

NEW



Digital Vacuum Gauge
Option Available



T80x Cold Trap
Upgrade Available

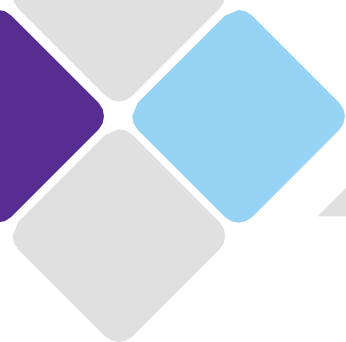


Compatible Vacuum Pumps

Ai	SVC21 (UL,CSA,CE Compliant to 110V models)
Edwards	E2M28
Welch	CRVPro48, CRVPro30
Agilent	IDP-15

Floor Space

Length	67 in
Width	46 in
Height	84 in
Weight	1390 lb



STACKABLE PACKAGES

7.5 Cu Ft Vacuum Ovens
Mobile Cart Package



Compatible Vacuum Pumps	
Welch	CRVPro48

Floor Space	
Length	126 in
Width	46 in
Height	84 in
Weight	2420 lb

NOTES

[illegible]



Material
Processing
Equipment

ISO 9001:2015



NEW JERSEY

111 Dorsa Avenue,
Livingston, NJ, 07039
USA



NEVADA

600 Spice Islands Dr.
Sparks, NV, 89431
USA



Tel:

888-988-0899



Web:

www.acrossinternational.com



Email:

All inquiries: info@acrossinternational.com

Sales: quotes@acrossinternational.com

Technical support: support@acrossinternational.com



V10252022